



## CERTIFICATE OF ANALYSIS

**PRODUCT NAME: EVENING PRIMROSE OIL, REFINED**

BATCH NUMBER: 4524001

PRODUCT INCI: OENOTHERA BIENNIS OIL

PRODUCT CODE: OCEVEPRI

CAS NUMBER: 90028-66-3

EINECS NUMBER: 289-859-2

MANUFACTURING METHOD: COLD PRESSED, REFINED

BEST BEFORE DATE: November 2025

| ANALYTICAL DETAILS         |                 | RANGE %     | RESULTS |
|----------------------------|-----------------|-------------|---------|
| APPEARANCE                 |                 | OILY LIQUID | -       |
| ODOUR                      |                 | ODOURLESS   |         |
| COLOUR<br>GARDNER          |                 | 4.0 - 13.0  |         |
| PEROXIDE ALUE MEQ 2/<br>KG | ANISIDINE VALUE | <10.0       | 1.2     |
|                            | ACID VALUE      | <15.0       | 5.3     |
|                            |                 | <5.0        | 0.27    |
| MOISTURE                   |                 | <0.2        |         |

| FATTY ACID PROFILE |                 | RANGE %     | RESULTS |
|--------------------|-----------------|-------------|---------|
| C-CHAIN            | ACID NAME       |             |         |
| C16:0              | PALMITIC        | 4.0 – 8.0   | 6.9     |
| C18:0              | STEARIC         | 1.0 – 4.0   | 2.5     |
| C18:1              | OLEIC           | 6.0 – 11.0  | 8.9     |
| C18:2              | LINOLEIC        | 65.0 – 80.0 | 71.5    |
| C18:3              | GAMMA-LINOLENIC | 8.0 - 12.0  | 9.1     |



## Allergen Declaration:

| PRODUCT NAME: Evening Primrose Oil Refined  |   | INCI: [REDACTED]    |                               |                   |
|---|---|---------------------|-------------------------------|-------------------|
| <b>COSMETIC ALLERGENS</b>   |   |                     |                               |                   |
| <small>The Following is from the 7th amendment of the cosmetic directive of the European Union Annex III.</small>   |   |                     |                               |                   |
| Annex IIIa Reference:   |   | CAS NUMBER:         | TOTAL ALLERGEN INCLUSION (%): |                   |
| 67  | AMYL CINNAMAL                                     | 122-40-7            | 0.00                          |                   |
| 68  | BENZYL ALCOHOL                                    | 100-51-6            | 0.00                          |                   |
| 69  | CINNAMYL ALCOHOL                                  | 104-54-1            | 0.00                          |                   |
| 70  | CITRAL  | 5392-40-5           | 0.00                          |                   |
| 71  | EUGENOL   | 97-53-0             | 0.00                          |                   |
| 72  | HYDROXY-CITRONELLAL                               | 107-75-5            | 0.00                          |                   |
| 73  | ISOEUGENOL  | 97-54-1             | 0.00                          |                   |
| 74  | AMYL CIN-NAMYL ALCOHOL                            | 101-85-9            | 0.00                          |                   |
| 75  | BENZYL SALICYLATE                                 | 118-58-1            | 0.00                          |                   |
| 76  | CINNAMAL  | 104-55-2            | 0.00                          |                   |
| 77  | COUMARIN  | 91-64-5             | 0.00                          |                   |
| 78  | GERANIOL  | 106-24-1            | 0.00                          |                   |
| 79  | HYDROXY- METHYLPENTYL CYCLOHEXENE CARBOXYALDEHYDE | 31906-04-4          | 0.00                          |                   |
| 80  | ANISE ALCOHOL                                     | 105-13-5            | 0.00                          |                   |
| 81  | BENZYL CINNAMATE                                  | 103-41-3            | 0.00                          |                   |
| 82  | FARNESOL  | 4602-84-0           | 0.00                          |                   |
| 83  | BUTYLPHENYL METHYLPROPIONAL                       | 80-54-6             | 0.00                          |                   |
| 84  | LINALOOL  | 78-70-6             | 0.00                          |                   |
| 85  | BENZYL BENZOATE                                   | 120-51-4            | 0.00                          |                   |
| 86  | CITRONELLOL                                       | 106-22-9            | 0.00                          |                   |
| 87  | HEXYL CINNAM-ALDEHYDE                             | 101-86-0            | 0.00                          |                   |
| 88  | LIMONENE  | 5989-27-5           | 0.00                          |                   |
| 89  | METHYL HEPTIN CARBONATE                           | 111-12-6            | 0.00                          |                   |
| 90  | ALPHA-ISOMETHYL IONONE                            | 127-51-5            | 0.00                          |                   |
| 91  | EVERNIA PRUNASTRI EXTRACT                         | 90028-68-5          | 0.00                          |                   |
| 92  | EVERNIA FURFURACEA EXTRACT                        | 90028-67-4          | 0.00                          |                   |
| <b>FOOD ALLERGENS</b>   |   |                     |                               |                   |
| <small>The following is from the commission directive 2007/68/EC of 27th November 2007 amending Annex IIIa to Directive 200/13/EC of the European Parliament &amp; Council with regards to specific food ingredients.</small> |   |                     |                               |                   |
| Annex IIIa Reference:   |   | PRESENT IN PRODUCT: | CONTAMINATION PRESENCE:       | FACTORY PRESENCE: |
| 1   | CEREALS ( CONTAINING GLUTEN )                     | NO                  | NO                            | YES               |
| 2   | CRUSTACEANS                                       | NO                  | NO                            | NO                |
| 3   | EGGS  | NO                  | NO                            | NO                |
| 4   | FISH  | NO                  | NO                            | NO                |
| 5   | PEANUTS   | NO                  | NO                            | YES               |
| 6   | SOYA  | NO                  | NO                            | YES               |
| 7   | MILK  | NO                  | NO                            | YES               |
| 8   | NUTS  | NO                  | NO                            | YES               |
| 9   | CELERY & CELERIAC                                 | NO                  | NO                            | NO                |
| 10  | MUSTARD   | NO                  | NO                            | YES               |
| 11  | SESAME  | NO                  | NO                            | YES               |
| 12  | SULPHUR DIOXIDE & SULPHITES                       | NO                  | NO                            | NO                |
| 13  | LUPIN   | NO                  | NO                            | NO                |
| 14  | MOLLUSC   | NO                  | NO                            | NO                |



## Composition Statement & Manufacturing Flow Chart:

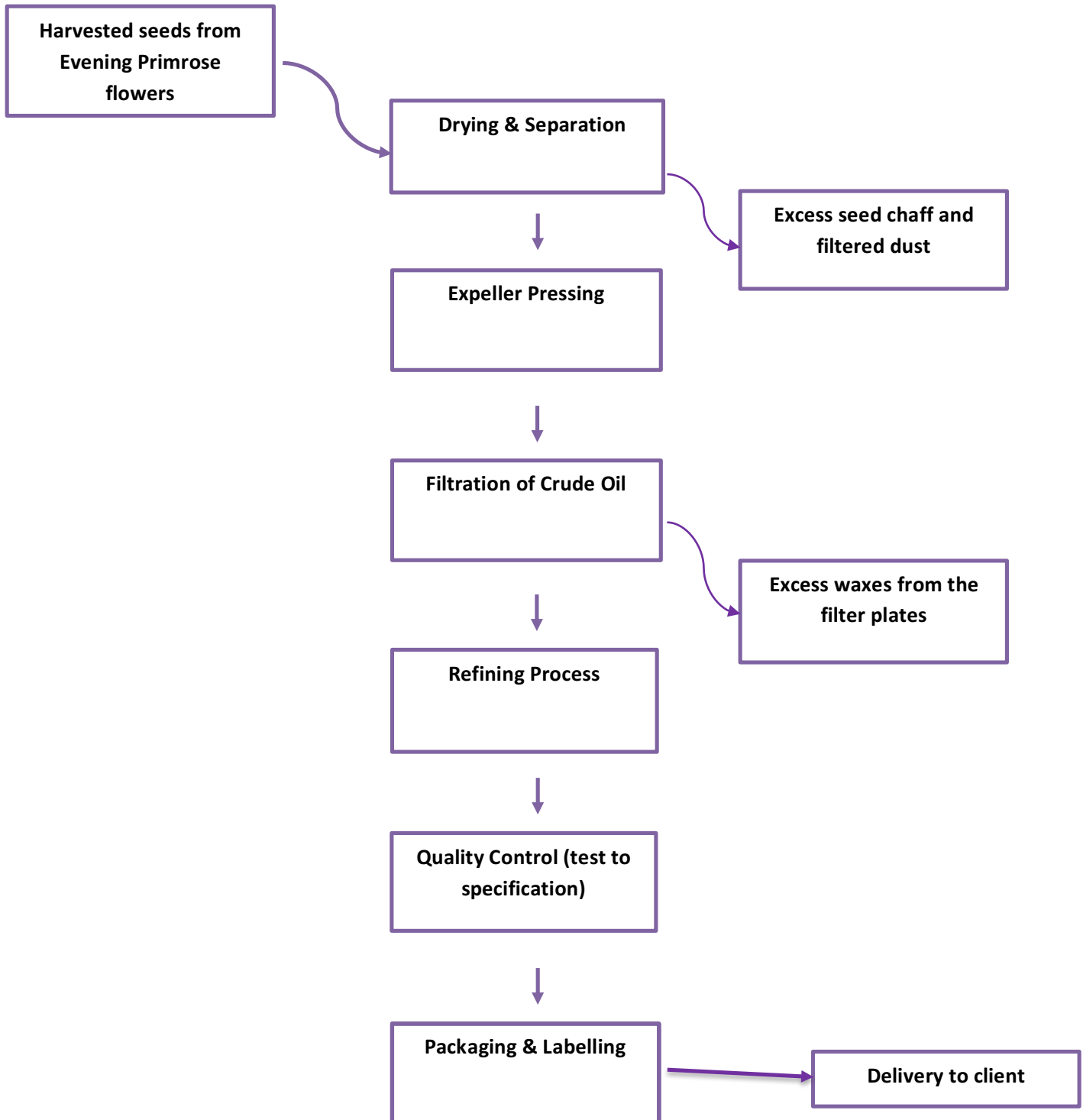
We can hereby confirm the following composition breakdown & manufacturing process flow;

**Evening Primrose Oil (9% GLA), Refined**

| INCI Name         | % Inclusion | CAS Number |
|-------------------|-------------|------------|
| Oenothera Biennis | 100         | 90028-66-3 |

The attached information is considered to be correct at the time the client received this information. Please be aware that detail can change and we encourage clients to update their records regularly. The information is not and should not be considered a guarantee or warranty, or a part of our contractual or other legal obligations. The information is not to be disclosed to others, reproduced or transmitted in whole or in part without permission f

# biOrigins



The attached information is considered to be correct at the time the client received this information. Please be aware that detail can change and we encourage clients to update their records regularly. The information is not and should not be considered a guarantee or warranty, or a part of our contractual or other legal obligations. The information is not to be disclosed to others, reproduced or transmitted in whole or in part without permission



## **GMO Statement**

PRODUCT NAME: Evening Primrose

MADAR Corporation Limited can confirm that the above listed product is GMO Free.

06/03/2020



## Material Safety Data Sheet

EU Regulation: 2020/878

### SECTION 1: Identification of the substance/mixture and of the company/undertaking

#### 1.1

##### Product Identification

|                                   |  |               |           |                   |           |
|-----------------------------------|--|---------------|-----------|-------------------|-----------|
| <b>Product Name</b>               | EVENING PRIMROSE OIL (9% GLA), REFINED   |               |           |                   |           |
| <b>Biological Definition</b>      | OENOTHERA BIENNIS OIL IS THE FIXED OIL DERIVED FROM THE SEEDS OF THE EVENING PRIMROSE, OENOTHERA BIENNIS, ONAGRACEAE |               |           |                   |           |
| <b>INCI Name</b>                  | OENOTHERA BIENNIS OIL  |               |           |                   |           |
| <b>Synonyms &amp; Trade Names</b> | EVENING PRIMROSE OIL   |               |           |                   |           |
| <b>Internal Product Code</b>      |  |               |           |                   |           |
| <b>CAS-No</b>                     | 90028-66-3   | <b>EC No.</b> | 289-859-2 | <b>EINECS No.</b> | 289-859-2 |

#### 1.2

##### Details of the supplier of the safety data sheet

|                        |  |  |  |  |  |
|------------------------|--|--|--|--|--|
| <b>Company Address</b> | Madar Corporation Limited<br>19 - 20 Sandleheath Industrial Estate, Fordingbridge, SP6 1PA |  |  |  |  |
| <b>Email</b>           | technical@madarcorporation.co.uk   |  |  |  |  |

#### 1.3

##### Details of the supplier of the safety data sheet

|                           |               |  |  |  |  |
|---------------------------|---------------|--|--|--|--|
| <b>Emergency Contacts</b> | 01425 655 555 |  |  |  |  |
|---------------------------|---------------|--|--|--|--|



| <b>SECTION 2: Hazards Identification</b>                                  |  |
|---|--|
| <b>2.1<br/>Classification of the substance or mixture</b>                 |  |
| <b>Classification (67/548/EEC)</b>  | This product is not dangerous according to REACH Regulation 2020/878.  |
| <b>Classification (EU 1272/2008)</b>                                      | This product does not belong to any list of substances supposedly hazardous to human or animal health according to EU Regulation 1272/2008 & any further amendments, nor to those having recognized exposition limits. Care should be taken when handling hot oil as it may constitute a burn hazard. Spills can constitute a slippage hazard. |
| <b>2.2<br/>Label Elements</b>   |  |
| <b>GHS Label</b>  | None.  |
| <b>Signal Word</b>  | None.  |
| <b>Contains</b>   | None.  |
| <b>Hazards Statement</b>  | None.  |
| <b>Signal Word</b>  | None.  |
| <b>Precautionary Statements</b>   | None.  |
| <b>Supplementary Precautionary Statements</b>                             | None.  |
| <i>Section 16 (Other Information): Risk &amp; Safety phrases in full.</i> |  |
| <b>2.3<br/>Other Hazards</b>  |  |
| <b>Adverse physio-chemical properties</b>                                 | None.  |
| <b>Adverse effects on human health</b>                                    | None.  |
| <b>SECTION 3: Composition of Ingredients</b>                              |  |
| <b>3.1<br/>Substances</b>   | Not Applicable.  |
| <b>3.2<br/>Mixtures</b>   | Not Applicable.  |

| <b>SECTION 4: First Aid Measures</b>             |  |
|--|--|
| <b>4.1<br/>Description of First Aid Measures</b> |  |
| <b>General Information</b>                       | Always remove contaminated clothing immediately.   |
| <b>Inhalation</b>                                | Not expected for this particular product, however always best avoiding proactive inhalation. |
| <b>Ingestion</b>                                 | No instruction as this is a non-toxic product.   |
| <b>Skin Contact</b>                              | No instruction as this is a non-toxic product.   |



|  |   |
|--|---|
| <b>Eye Contact</b>   | Wash immediately & thoroughly with clean tap water. |
| <b>4.2 Most important symptoms &amp; effects (Acute &amp; Delayed)</b>                 | None.   |
| <b>4.3 Indication of any immediate medical attention or special treatment required</b> | Not Applicable.                                     |

### SECTION 5: Fire Fighting Measures

|  |  |
|--|--|
| <b>5.1 Extinguishing material</b>                                | Foam, Co2, Dry Chemical Powder.  |
| <b>5.2 Special hazards arising from the substance Or mixture</b> | This product may only form ignitable mixtures or burn above the flash point. Dangerous combustion products include smoke & oxides of carbon. |
| <b>5.3 Advice for fire-fighters</b>                              | Standard. Wear self-contained breathing apparatus in confined spaces.  |

### SECTION 6: Accidental Release Measures

|   |   |
|---|---|
| <b>6.1 Personal precautions</b>                                   | None Required.  |
| <b>6.2 Environmental precautions</b>                              | None Required.  |
| <b>6.3 Methods &amp; material for containment and cleaning up</b> | Spills can be absorbed by cloth or sawdust, washed away with water & cleaned with sodic products. |
| <b>6.4 References to other sections</b>                           | Refer & consider section 8.<br>Refer & consider section 13.                                       |

### SECTION 7: Handling & Storage

|   |  |
|---|--|
| <b>7.1 Precautions for safe-handling</b>                                | Handle in accordance with good hygiene and safety practice. Keep containers sealed when not in use. Prevent spills & leaks to avoid slip hazard. Always wear personal protective clothing (refer to section 8). Do not eat, drink, sniff or smoke whilst handling this product. Provide suitable mechanical equipment for the safe handling of drums & heavy packages. |
| <b>7.2 Conditions for safe storage, including any incompatibilities</b> | Keep the product container tightly closed, in a dry, ventilated area (at temperatures <20°C). Keep away from potential sources of ignition and protected from light. Maintain limited contact with oxygen.   |
| <b>7.3 Specific end use(s)</b>  | No Data.   |

### SECTION 8: Exposure Controls & Personal Protection

|                               |  |
|-------------------------------|--|
| <b>8.1 Control Parameters</b> | None.  |
| <b>8.2 Exposure Controls</b>  |  |
| <b>Eye Protection</b>         | Not required as a non-toxic product, however we still recommend taking precautions by wearing protective eye-wear when handling the product. |
| <b>Hand Protection</b>        | None.  |
| <b>Respiratory Equipment</b>  | None.  |
| <b>Hygiene Measures</b>       | None.  |
| <b>Engineering Measures</b>   | None.  |

### SECTION 9: Physical & Chemical Properties



|   |  |
|---|--|
| <b>9.1 Physical &amp; Chemical Properties</b>                   |  |
| <b>Appearance</b>   | OILY LIQUID  |
| <b>Colour</b>   | CLEAR - LIGHT YELLOW   |
| <b>Odour</b>  | ODOURLESS  |
| <b>Relative Density</b>   | NO DATA.   |
| <b>Refractive Index</b>   | 1.475 – 1.484  |
| <b>Flash Point (°C)</b>   | >280°C.  |
| <b>Melting Point (°C)</b>                                       | NOT APPLICABLE.  |
| <b>Boiling Point (°C)</b>                                       | >100°C.  |
| <b>Vapour Pressure</b>  | NO DATA.   |
| <b>Solubility in Water @ 20°C</b>                               | INSOLUBLE.   |
| <b>9.2 Other Information</b>                                    | NO DATA.   |
| <b>9.2.1 Information with regard to physical hazard classes</b> | NONE.  |
| <b>9.2.2 Other safety characteristics</b>                       | NONE.  |
| <b>SECTION 10: Stability &amp; Reactivity</b>                   |  |
| <b>10.1 Reactivity</b>  | Not Applicable.  |
| <b>10.2 Chemical stability</b>                                  | Stable under suggested storage conditions (<20°C).   |
| <b>10.3 Possibility of hazardous reactions</b>                  | No.  |
| <b>10.4 Conditions to avoid</b>                                 | Storage at high temperatures. Do not store above 20°C.   |
| <b>10.5 Incompatible materials</b>                              | Concentrated acids, alkalis & oxidising agents.  |
| <b>10.6 Hazardous decomposition products</b>                    | This product does not decompose under normal conditions. Under fire conditions the product will produce a mixture of irritating fumes & smoke. |

|  |   |
|--|---|
| <b>SECTION 11: Toxicological Information</b> |   |
| <b>11.1 Toxicological effects</b>            |   |
| <b>Acute Toxicity</b>                        | A non-toxic product. For pharmaceutical & cosmetic use only. This product does not carry a microbiological specification as it is sterilised in the refining process. It does not contain any impurities. This product is not included in the list of substances prohibited in cosmetic products or subject to restrictions. It does not contain colorants, preservatives or UV filters (Annex II – VI of EU regulation 1223/2009). |
| <b>Skin irritation</b>                       | Not Applicable.   |
| <b>Eye damage or irritation</b>              | Not Applicable.   |
| <b>Respiratory or skin sensitivity</b>       | Not Applicable.   |



|  |  |
|--|--|
| <b>Germ cell mutagenicity</b>                        | Not Applicable.  |
| <b>Carcinogenicity</b>                               | Not Applicable.  |
| <b>Reproductive toxicity</b>                         | Not Applicable.  |
| <b>STOT – single exposure</b>                        | Not Applicable.  |
| <b>STOT – repeated exposure</b>                      | Not Applicable.  |
| <b>Aspiration hazard</b>                             | Not Applicable.  |
| <b>11.2<br/>Information on other hazards</b>         | Not Applicable.  |
| <b>SECTION 12: Ecological Information</b>            |  |
| <b>12.1<br/>Toxicity</b>                             | Low - None.  |
| <b>12.2<br/>Persistence &amp; degradability</b>      | >90% (OECD)  |
| <b>12.3<br/>Bio- accumulative potential</b>          | None.  |
| <b>12.4<br/>Mobility in soil</b>                     | Low – None.  |
| <b>12.5<br/>Results of PBT &amp; VPVB assessment</b> | Not Available.   |
| <b>12.6<br/>Endocrine disrupting propertis</b>       | None.  |
| <b>12.7<br/>Other adverse effects</b>                | None.  |
| <b>SECTION 13: Disposal Information</b>              |  |
| <b>13.1<br/>Waste treatment methods</b>              | Always recover spilled product. Discard waste material with authorized waste management services. Act in accordance with local & national waste regulations. |

|  |   |
|--|---|
| <b>SECTION 14: Transport Information</b> |   |
| <b>14.1<br/>Transport Information</b>    |   |
| <b>Warning icon</b>                      | Road (ADR), Rail (RID), Sea (IMDG) and Air (ICAO), transport not restricted in drums or food tankers. |
| <b>Shipping Name</b>                     | Not Applicable.   |
| <b>UN Number (Road)</b>                  | Not Applicable.   |
| <b>ADR Class</b>                         | Not Applicable.   |
| <b>Hazard Number (ADR)</b>               | Not Applicable.   |
| <b>Hazchem Code</b>                      | Not Applicable.   |
| <b>UN Number (Sea)</b>                   | Not Applicable.   |
| <b>IMDG Class</b>                        | Not Applicable.   |
| <b>IMDG Pack GR.</b>                     | Not Applicable.   |
| <b>EMS</b>                               | Not Applicable.   |
| <b>UN Number (Air)</b>                   | Not Applicable.   |
| <b>Air Class</b>                         | Not Applicable.   |



|   |   |
|---|---|
| <b>Air Pack GR.</b>   | Not Applicable.   |
| <b>Maritime transport in bulk according to IMO instruments</b>                                | Not Applicable.   |
| <b>SECTION 15: Regulatory Information</b>   |   |
| <b>15.1 Product specific safety, health &amp; environmental regulations &amp; legislation</b> |   |
| <b>EU Directives</b>  | Regulation (EC) No 2020/878 of the European Parliament and of the council of 18 <sup>th</sup> December 2006. Concerning the registration, evaluation, authorization & restriction of chemicals (REACH), establishing a European Chemicals Agency, amending Directive 199/45/EC and repealing council regulation (EEC) No793/93 & commission regulation (EC) No1488/94 as well as council directive 76/769/EEC & commission directive 91/155/ECC, 93/67/ECC, 93/105/EEC & 2000/21/EC (including amendments). |
| <b>Statutory Instruments</b>  | The Chemicals (Hazard Information & Packaging for Supply Regulations 2009 (S.I.2009 No 716).  |
| <b>Approved Code of Practice</b>  | Classification & labelling of substances & preparations dangerous for supply. Safety data sheets for substances & preparations.   |
| <b>Guidance Notes</b>   | Workplace exposure limits EH40. CHIP for everyone HSG 108.  |
| <b>15.2 Chemical Safety Assessment</b>  | Assessment has not been carried out as this is a non-hazardous material according to article 31 of REACH 2020/878.  |

|  |  |
|--|--|
| <b>SECTION 16: Other Information</b>   |  |
| <b>Allergens:</b>  | None.  |
| <b>Training Instructions: Refer to possible hazard before use of this product.</b> |  |
| <b>Abbreviations &amp; Acronyms:</b>   |  |
| <b>MSDS</b>  | Material Safety Data Sheet.  |
| <b>INCI</b>  | International Nomenclature of Cosmetic Ingredients.  |
| <b>CAS</b>   | Chemical Abstract Service.   |
| <b>IMDG</b>  | International Maritime code for Dangerous Goods.   |
| <b>ADR</b>   | Accord European sur le transport des marchandises Dangereuses par Route (European Agreement concerning the international Carriage of Dangerous goods by Road). |
| <b>RID</b>   | International Carriage of Dangerous Goods by Rail.   |
| <b>ICAO</b>  | International Civil Aviation Organization.   |
| <b>ADN</b>   | International Carriage of Dangerous Goods by Inland Waterways.   |
| <b>GHS</b>   | Globally Harmonized System of classification & labelling of chemicals.   |



|                  |                                 |
|------------------|---------------------------------|
| <b>Trem Card</b> | Transport Emergency Card.       |
| <b>STOT</b>      | Specific Target Organ Toxicity. |

| <b>Documentation Revision</b> |                               |
|-------------------------------|-------------------------------|
| <b>Date</b>                   | <b>Change Description</b>     |
| 10 <sup>th</sup> April 2018   | Data Launch                   |
| November 2020                 | Review                        |
| 14/09/2021                    | Removed word "seed" from INCI |
| December 2022                 | EU Regulations changed        |



## SPECIFICATION SHEET

PRODUCT NAME: **EVENING PRIMROSE OIL, REFINED**

PRODUCT INCI: OENOTHERA BIENNIS OIL

CAS NUMBER: 90028-66-3

EINECS NUMBER: 289-859-2

MANUFACTURING METHOD: COLD PRESSED, REFINED

SHELF LIFE: 24 MONTHS

DOCUMENTATION REVIEWED: MAY 2018

| ANALYTICAL DETAILS                       | RANGE %              |
|--|----------------------|
| APPEARANCE                               | OILY LIQUID          |
| ODOUR                                    | ODOURLESS            |
| COLOUR                                   | CLEAR – LIGHT YELLOW |
| COLOUR GARDNER                           | < 7.0                |
| SPECIFIC GRAVITY @ 20°C                  | 0.920 – 0.935        |
| REFRACTIVE INDEX @ 20°C (NR)             | 1.475 – 1.484        |
| PEROXIDE VALUE (MEQ O <sub>2</sub> / KG) | <15.0                |
| ANISIDINE VALUE                          | <15.0                |
| ACID VALUE                               | <1.0                 |
| SAPONIFICATION VALUE (MG KOH/GR)         | 180 – 195            |
| UNSAPONIFIABLE MATTER                    | < 2.5                |

| FATTY ACID PROFILE |                 | RANGE %     |
|--------------------|-----------------|-------------|
| C-CHAIN            | ACID NAME       |             |
| C16:0              | PALMITIC        | 4.0 – 10.0  |
| C18:0              | STEARIC         | 1.0 – 4.0   |
| C18:1              | OLEIC           | 5.0 – 12.0  |
| C18:2              | LINOLEIC        | 65.0 – 85.0 |
| C18:3              | GAMMA-LINOLENIC | >9.0        |

*The attached information is considered to be correct at the time the client received this information. Please be aware that detail can change and we encourage clients to update their records regularly. The information is not and should not be considered a guarantee or warranty, or a part of our contractual or other legal obligations. The information is not to be disclosed to others, reproduced or transmitted in whole or in part without permission*



## **Vegetarian & Vegan Suitability Statement**

PRODUCT NAME: Evening Primrose

MADAR Corporation Limited can confirm that the above listed product has not been tested in animals and does not contain dairy or any other animal product, by product or derivative and is therefore suitable for vegetarian and vegan use.

06/03/2020